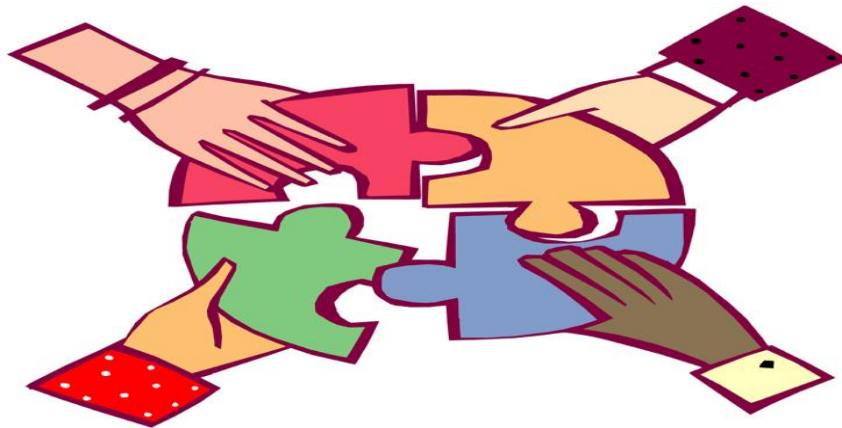


# CITY OF EVANSTON

## Social Services Proposal



**Richard Eddington, Chief of Police**

**Evonda Thomas-Smith, Health & Human Services Director**

**Lawrence Hemingway, Director of Parks Recreation and  
Community Services**

October 28, 2017

# OVERVIEW OF CURRENT SERVICES

- 1) Historical Perspective**
- 2) Evolution**



# VICTIMS SERVICES PROGRAM'S ANNUAL 2015 DATA

1367	Follow-up on new crime cases
1008	Follow-up on new non-crime cases
274	Instances of court advocacy
2821	Referrals
35	Forensic Interviews attended
62	Crisis call outs
66	Orders of Protection pre
476	Civil order of protection referrals
35	Community Meetings
329	Hours spent in Court
73	Referrals for crime victims compensation

# VICTIMS SERVICES PROGRAM'S ANNUAL 2016 DATA

1323	Follow-up on new crime cases
793	Follow-up on new non-crime cases
324	Instances of court advocacy
35	Forensic Interviews attended
110	Crisis call outs
99	Orders of Protection pre
675	Face-to-Face contacts with crime victims seeking social services
44	Community Meetings
460	Hours spent in Court
49	Referrals for crime victims compensation

# YOUTH SERVICES PROGRAM'S ANNUAL 2015 DATA

- 377 Follow-up with parents/guardians on criminal/non-criminal incidents
- 17 Family Counseling
- 34 Family counseling and community services cases
- 10 Family Counseling and Restorative Justice Cases
- 391 Family Counseling meetings
- 426 Family Counseling hours spent
- 406 Number of youth and or family advocacy contacts

# YOUTH SERVICES PROGRAM'S ANNUAL 2016 DATA

1129	F/U with parents/guardians on criminal/non-criminal incidents
20	Family Counseling
16	Family counseling and community services cases
20	Family Counseling and Restorative Justice Cases
686	Family Counseling meetings
734	Family Counseling hours spent
548	Number of youth and or family advocacy contacts

# HEALTH DEPARTMENT TRANSITIONS TO HUMAN SERVICES

Safety Net Provider

Respected Gatekeeper

Evolution of Medical Services

Integration of The Township Services

Art and Science

# HOW WE SERVE

## Other Enabling Services

- **Violence Cycle Interruption (absent)**
- **Perpetrator Intervention (Absent)**
- **Court Liaison (Present)**
- **Death Notification and Personal Tragedies (Present)**



# TRAUMA INFORMED CARE APPROACH

Trauma-informed care initiative seeks to incorporate knowledge about trauma prevalence, impact, and recovery in all aspects of service delivery.

There are five primary principles for trauma-informed care.

Safety

Trustworthiness and Transparency

Choice

Collaboration

Empowerment

Source: Roger D. Fallot and Maxine Harris, 2006

# PROPOSAL FOR CONSIDERATION

## Transition Positions to Health and Human Services

- Senior Human Services Advocate (1FTE)
- Human Services Advocate (3 PTE)

# PROPOSAL OPTION

## Transition position to Parks, Recreation and Community Services

- Historical Perspective on City's Juvenile Advocacy
- Current Outreach Structure
- Moving Forward

# PROPOSAL OPTION

Transition  
position to  
Parks,  
Recreation  
and  
Community  
Services

- Become a part of Community Services Division
- Youth Advocate (.8FTE)
- Will continue to coordinate support of families that are experiencing youth related crisis.
- Focus on diversionary options for juvenile offenders.
- Coordinate services with community partners and juvenile court systems.

# PROPOSAL OPTION

Transition  
position to  
Parks,  
Recreation  
and  
Community  
Services

- Become a part of Community Services Division
- Youth Advocate (.8FTE)
- Will continue to coordinate support of families that are experiencing youth related crisis.
- Focus on diversionary options for juvenile offenders.
- Coordinate services with community partners and juvenile court systems.

# PROPOSAL OPTION

## Transition position to Parks, Recreation and Community Services

- Continue with Community Service program
- Continue implementing restorative justice strategies
- By this position coming to PRCS, this will allow for a synergy between the youth advocate position and our current outreach workers by collaborating on comprehensive strategies needed to support a young person in crisis.

# FINANCIAL IMPACT

Police		
	Transfer Social Services Bureau	(680,000)
	(Reorganize to Health Dept & PRCS Dept)	
	1 FTE Social Services Manager	
	3 FTE Victim Advocate	
	1.3 FTE Youth Advocate	
Health		
	Add 1 FTE Senior Human Services Advocate	\$280,000
	Add 3 PT Human Services Specialists	
PRCS		
	Transfer .8 FTE Youth Advocate	\$92,000
	(From Police Social Services Bureau)	
	Net Savings	\$308,000

# QUESTIONS AND DISCUSSION